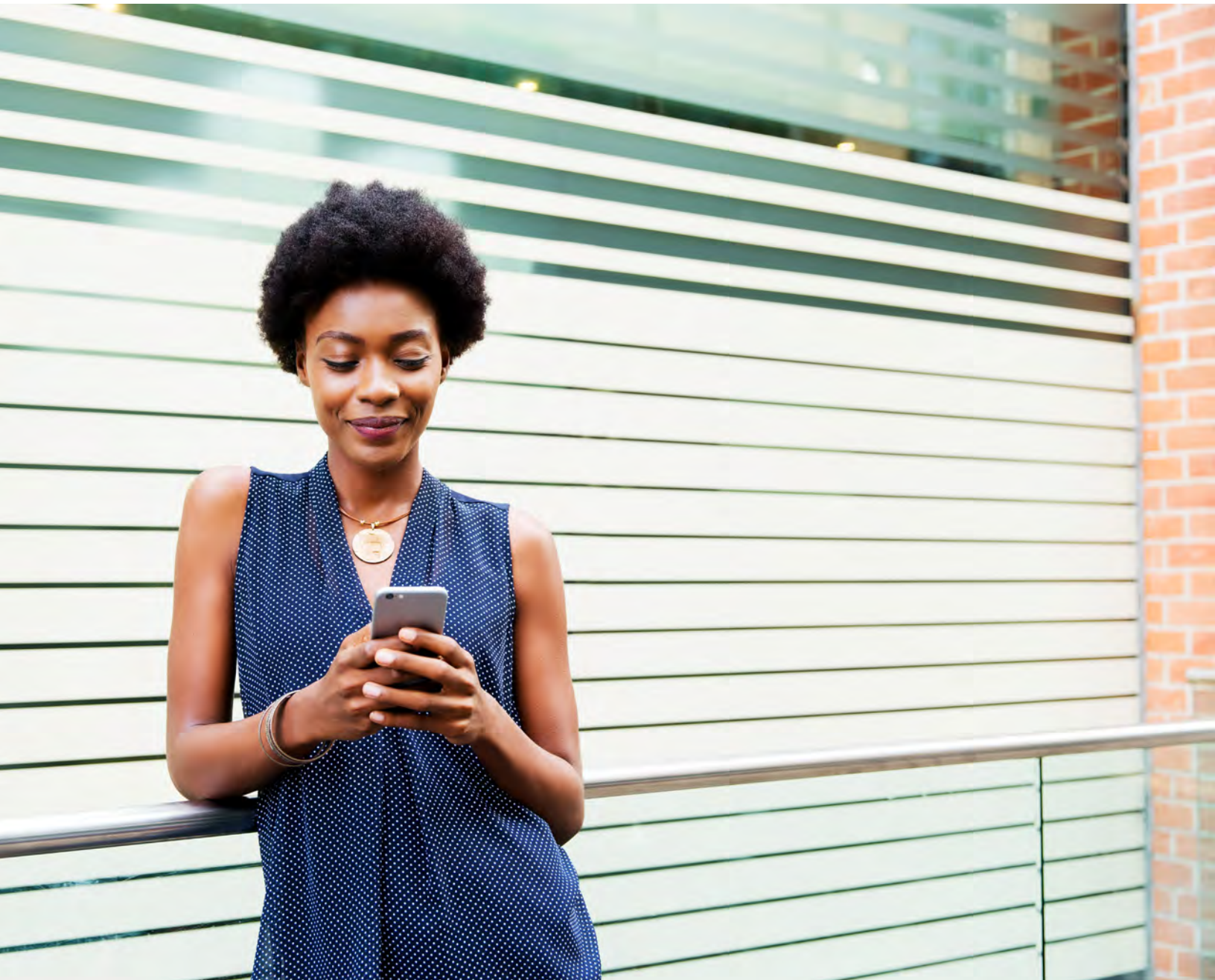


CISCO



Zero Trust – Simplified

Discover seamless, customizable, secure access management with Cisco Duo and Microsoft



Contents

Can security and productivity coexist in a hybrid world?	2
Fortify your user identities against threat actors.....	4
Discover security that enables work rather than hinders it.....	6
Simplify compliance with seamless zero trust	8
Case Study: Cisco	9
Embrace comprehensive access management without sacrifice	10

Can security and productivity coexist in a hybrid world?

Businesses are looking for effective security solutions as they move from static networks to **dynamic digital ecosystems**

Business growth and technological advancement rarely follow a set path. In reality, legacy applications often get pulled forward into the new hybrid era and the way users access company resources is expanding. Employees are now frequently using personal devices in conjunction with company-managed equipment, and the concept of the workplace has shifted from a physical office connected to the company network to connecting remotely from almost anywhere. Amid constant change, organizations are struggling to find a comprehensive security solution that meets their needs. According to Cisco's 2024 Cybersecurity Readiness Index report:

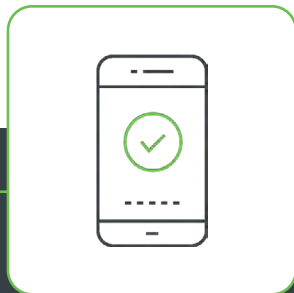
- **54% of respondents** said they had experienced a cybersecurity incident in the past year.¹
- Only **3% of organizations** globally are assessed as having a mature level of cybersecurity readiness to handle the security risks of our hybrid world.¹
- **97% of companies** are planning to increase spending on cybersecurity in 2024.¹

Organizations need a robust solution that can meet them where they are and continue to secure their ever-changing environment without overhauling or overcomplicating their system.



Bridge the gap between productivity, security, and value **with Duo and Microsoft**

Instead of balancing the tradeoffs between stronger security and employee experience, unlock incredible value when you improve both simultaneously. Duo was designed specifically to bridge this gap with a streamlined continuous identity security and access management solution that delivers consistent, user-friendly experiences to employees – ready to deploy at any stage of your digital transformation. And by integrating with your existing Microsoft Security solutions, such as access management products like Microsoft Entra ID, you can extend the benefits of both solutions.



Fortify your user identities against threat actors

Implement multi-layered defenses that frustrate attackers, not users. This doesn't end at authentication.



Discover security that enables work rather than hinders it

Maintain effective zero trust security while making applications more accessible for a hybrid workforce.



Simplify compliance with seamless zero trust

Easily implement and demonstrate compliance with regulations that require a zero trust security model.



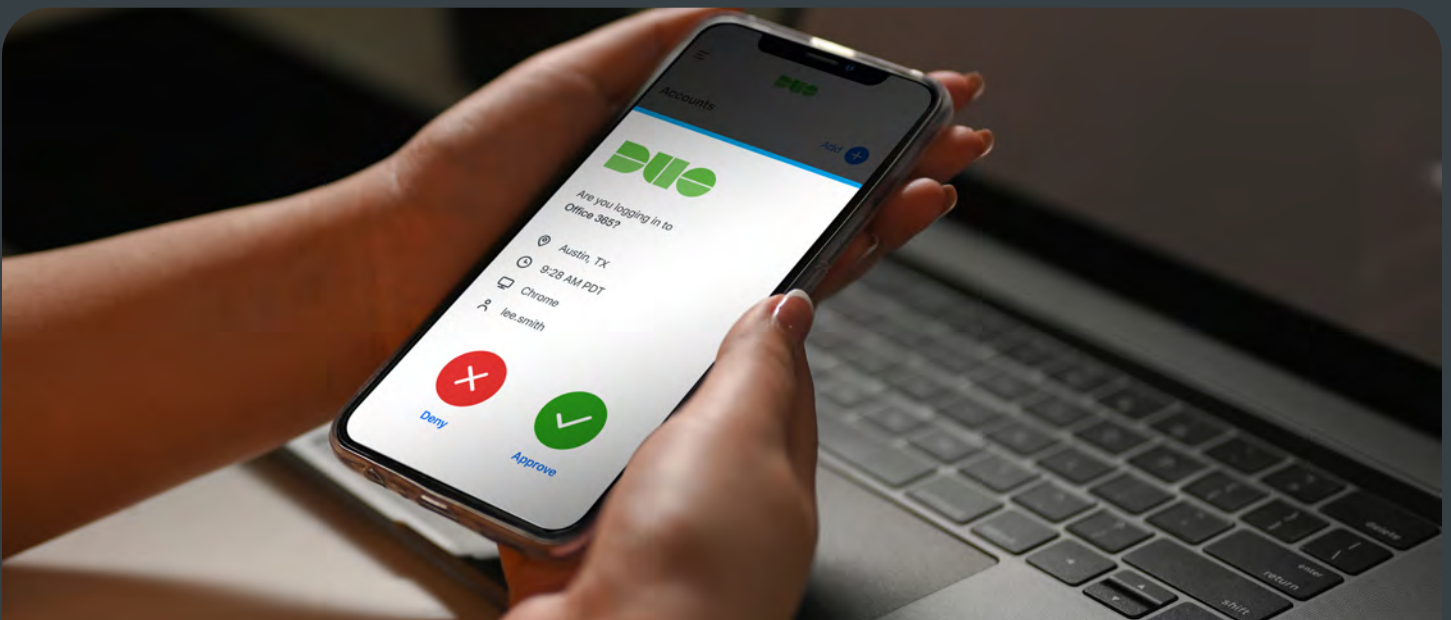
Fortify your user identities against threat actors

Implement multi-layered defenses that frustrate attackers, not users. This doesn't end at authentication.

Now that organizations are no longer operating with an easily defined network perimeter, threat actors have been quick to take advantage of new potential entry points. The move to hybrid ecosystems may also mean that IT teams now have multiple identity sources or user directories to track and protect. To combat this, organizations need to enact new solutions that focus on securing identities and connections across providers. However, even modern security solutions like multifactor authentication (MFA) can be vulnerable to tactics like push bombing or adversary-in-the-middle attacks. This evolving landscape often leads to security fatigue among businesses, as they must continually adapt their strategies to accommodate their changing environment and emerging attack strategies.

Combat modern threats with advanced multi-layered defenses from Duo. Duo is an easy-to-deploy,

customizable authentication solution that integrates with FIDO2 authenticators or Verified Duo Push to protect against attacks such as push phishing that attempt to bypass MFA. Layered with Cisco Identity Intelligence, Duo provides multi-vendor visibility across all identity sources, assesses identity-related risk using AI, and enriches Duo's risk-based authentication and contextual policy enforcement, empowering customers to identify, detect, protect, and respond to identity-based threats. These capabilities seamlessly complement existing identity and access management solutions like Microsoft Entra ID, and they don't stop once the user is logged in. Anomalous behavior, such as session hijacking, can be detected at any time. Together, they create rich contexts about user identities and expected actions, strengthening their ability to rapidly identify and shut down suspicious activity.



Duo Continuous Identity Security



Verified Users

Broadest application coverage with traditional MFA

Diverse set of authenticators

Simple for both admins & users



Trusted Devices

Trust only securely registered and managed devices

Manage endpoint posture

Easily deploy to contractors & third parties



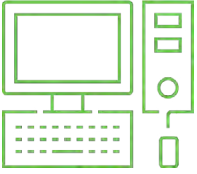
Identity Context

Visibility into identity-centric telemetry

Understand baseline activity

React to anomalies and identity threats

Pre login | At login | Post login



Discover security that enables work rather than hinders it

Maintain effective zero trust security while making applications **more accessible for a hybrid workforce**

It's understandable that organizations moving into a hybrid way of operating are looking for ways to strengthen security. The natural, though flawed, first inclination is to just add *more* security. Unfortunately, overly complicated security solutions and authentication requirements can have the opposite effect. If users have to go through multiple steps each time they need to access an app, productivity will suffer, and eventually, they will start looking for ways around what they see as obstacles to their job. On the back end, managing these

complex layers of cybersecurity is burdensome for IT teams who must constantly configure systems to meet evolving needs and assist users with frequent access issues.

With Duo, accessing company resources in a hybrid environment can actually become easier, not harder. Duo uses contextual data to make informed decisions as to when additional authentication is necessary, eliminating the need for redundant user verifications. In addition, Duo Passport enables seamless authentication and login experiences from the operating system onward with single sign-on support, so employees only need to use one account to access all their applications instead of separate login credentials for each one. Similarly, Duo enables access to internal applications that normally require a VPN, streamlining another connection process. All this is built on Duo's Continuous Identity Security architecture that provides cross-platform visibility into identity posture, helping organizations detect and defend against identity-based threats.

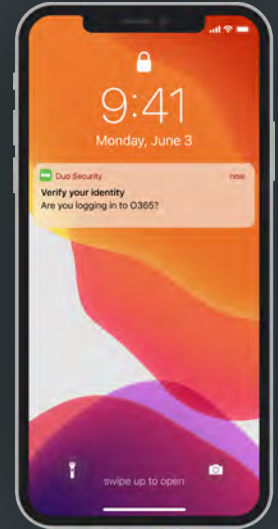
For IT teams, the integration with Microsoft Entra ID enables the seamless addition of Duo's strong security controls, like risk-based authentication and granular adaptive access controls, without affecting the identities themselves. Duo also provides them with one place to set up and manage access policies across all their applications – in the cloud and on-premises – in just a few clicks.



The real-world impact of user-friendly security

Improved user experience doesn't just have subjective value for employees; it has quantifiable financial returns. In fact, [The Forrester Total Economic Impact of Duo](#) report found that **most** of the financial returns from using Duo came from improved authentication experiences. This is largely thanks to the significant time savings for both users and IT teams and the reduced risk surface stemming from the widespread adoption of access security.

- 159% ROI²
- \$3.2M in end-user time saved from streamlined authentication²
- Payback/investment breakeven in less than 6 months²



ROI
159%



BENEFITS PV
\$5.26M

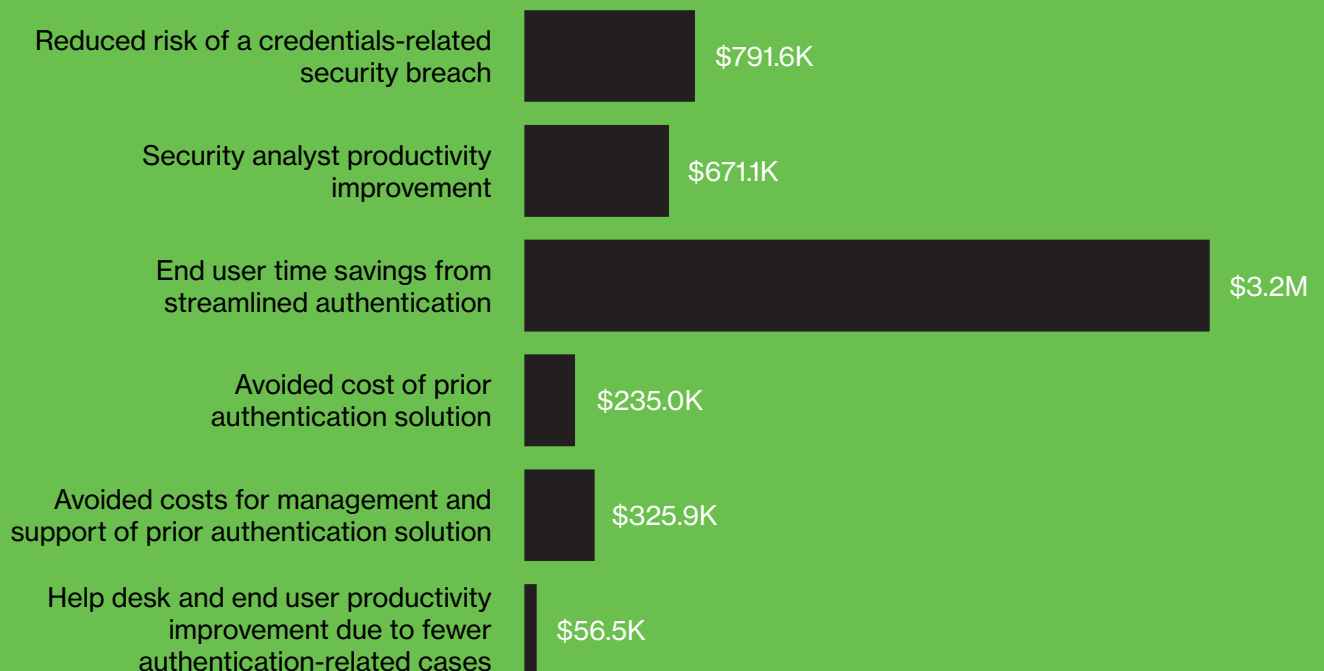


NPV
\$3.23M



PAYBACK
<6 months

Benefits (Three-Year)





Simplify compliance with seamless zero trust

Easily implement and demonstrate compliance with regulations that **require a zero trust security model**

Businesses aren't the only ones to recognize the shift required to remain secure in a borderless digital world. A zero trust security model is a common recommendation or requirement for many regulations, including HIPAA, FTC, DEA, PCI-DSS, and more. Demonstrating adherence to zero trust is also a common requirement for cyber liability insurance.

Duo streamlines the implementation of zero trust practices like least privilege access and simplifies compliance across your network. With Duo's continuous identity security and adaptive access policies, you can tailor your access requirements to include approved user groups, locations, updated operating systems, and

company-managed devices as necessary. Additionally, leveraging Duo Trust Monitor, Duo Policy moves beyond contextual signals such as user location, networks from web access requests, and device attributes and status from Duo Mobile (iOS, Android) and Duo Desktop. Duo is now expanding those signals to include patent-pending Wi-Fi Fingerprint technology. Wi-Fi Fingerprint enables Duo to convert Wi-Fi network information into anonymized data to know if the user has changed locations, without ever tracking that user's location. You'll have a clear view of every device attempting to access your resources. With detailed logs and reports on each login attempt, demonstrating compliance becomes effortless.

Words from our peers

We love talking about the benefits of Duo, but the real testament comes from our users and industry peers.

- 95% of peers recommend Cisco Duo.³
- Duo is the top-rated solution for user authentication on Gartner Peer Insights.⁴
- Duo was named Best Access Management solution by SC Magazine in 2022.⁵

What customers say

From start-ups to large enterprises, companies of all sizes depend on Cisco Duo to prevent unauthorized access.

100K+

Customers Globally



4.5 ★★★★★

95% Would Recommend

Based on 620 reviews as of Apr 2024 [Read Here](#)



Cisco Duo ★ Top Rated
Score 9.4 out of 10
298 Reviews and Ratings • Authentication

Top Rated by TrustRadius cybersecurity product. [Read Here](#)

Case Study: Cisco

Situation

Cisco was quickly evolving beyond its traditional network perimeter. To meet the needs of the company's growing hybrid workforce, it needed to adopt a hybrid IT environment – both on-premises and in the cloud. However, this shift introduced new security needs. To protect company resources spread across an expanded digital ecosystem and leverage Microsoft Entra ID, Cisco knew it needed to implement a zero trust strategy to effectively verify every access attempt to every application.

Challenge

Users were struggling to access company applications when working remotely. One of the highest priorities was ensuring users had secure yet easy access to the Microsoft 365 solutions they used every day to do their work. Another complication was that some apps required a VPN to access while others did not. This was confusing to navigate and left employees feeling like they were constantly authenticating, while the burden of meeting the increased reliance on the company's VPN largely fell to IT teams to manage. Finally, the company struggled to verify that all remote devices were maintained with current operating systems and the necessary security updates.

Result

In just three months, Cisco successfully rolled out Duo's secure authentication app to their entire domestic user base and, by the five-month mark, had expanded to include all their 100,000 users across 98 countries. Thanks to the solution's ease-of-use, Cisco saw a return on investment of \$3.4M in annual productivity cost savings alone, along with \$500,000 in IT help desk savings.



Solution

Cisco leveraged multiple different capabilities included in Duo for this rollout:

- **Duo MFA** – Allowed easy self-enrollment and customizable verification methods for users while preventing fraudulent login attempts.
- **Duo Trust Monitor** – Improved visibility by immediately flagging nefarious or unusual user behavior on a user-friendly interface for system administrators.
- **Duo Desktop** – Ensured each device was healthy and up to date before granting access.
- **Duo Trusted Endpoints** – Limited sensitive application access to only corporate-managed devices.
- **Duo Network Gateway (DNG)** – Provided access to applications without requiring a VPN.

And more! [Read the full case study here.](#)

Embrace comprehensive access management **without sacrifice**

Robust security doesn't need to overwhelm your employees or your budget. Get the streamlined access management security you need to power your hybrid workforces and digital ecosystems when you combine Duo's identity security solution with Microsoft.

Duo has many prebuilt integrations with Microsoft, from Remote Desktop and Microsoft Entra ID to Windows Logon, and more. Explore our integrations with Microsoft [here](#).

Duo + Microsoft: A History of Partnership

Integrations



Secure access to Windows Logon & Remote Desktop Protocol



Device Trust & Health policy in Microsoft Intune



Deploy Duo Single Sign-On with Microsoft Entra ID, Microsoft Azure, and Microsoft Active Directory Federation Service



Protect Windows 365 & web apps



Fully integrated MFA and advanced identity security provider within Microsoft Entra ID External Authentication Methods



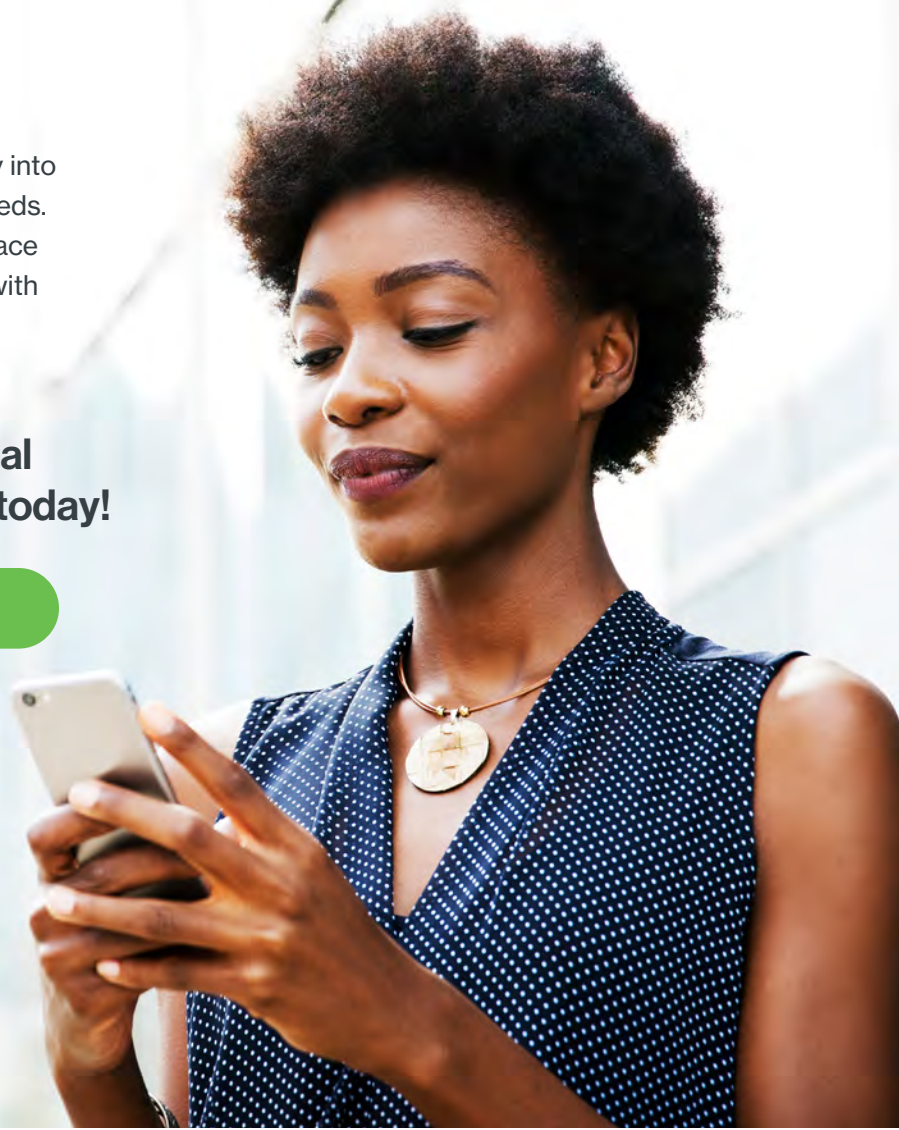
Secure, seamless single authorization with Duo Passport

Duo is built to be deployed rapidly, blend seamlessly into workflows, and be customizable to your evolving needs. With Duo and Microsoft on your side, you can embrace all the variability and possibilities of the hybrid age with confidence.

Find us on the Microsoft commercial marketplace or start your free trial today!

[Learn more](#)

[Free trial](#)



¹ 2024 Cisco Cybersecurity Readiness Index

² The Forrester Total Economic Impact of Duo | Forrester

³ Cisco Duo User Reviews | Gartner Peer Insights

⁴ User Authentication Reviews and Ratings | Gartner Peer Insights

⁵ SC Magazine, 2022

CISCO



Member of
**Microsoft Intelligent
Security Association**



CISCO

